

Aboriginal and Torres Strait Islander Registration Data: March 2013

Published April 2013

Introduction

The functions of the Aboriginal and Torres Strait Islander Health Practice Board of Australia include:

- registering the Aboriginal and Torres Strait Islander practitioners and students
- developing standards, codes and guidelines for the Aboriginal and Torres Strait Islander health practice profession
- handling notifications, complaints, investigations and disciplinary hearings
- approving accreditation standards and accredited courses of study.

The Board's functions are supported by Australian Health Practitioner Regulation Agency (AHPRA). For information about legislation governing our operations see AHPRA's Legislation & Publications at www.ahpra.gov.au/Legislation-and-Publications.aspx

The Board has analysed its registration data and produced a number of statistical breakdowns about registrants to share with the profession and community. The Board shares these breakdowns regularly.

For more information on Aboriginal and Torres Strait Islander Health Practitioners registration, please see the Board's website: www.atsihealthpracticeboard.gov.au/Registration.aspx

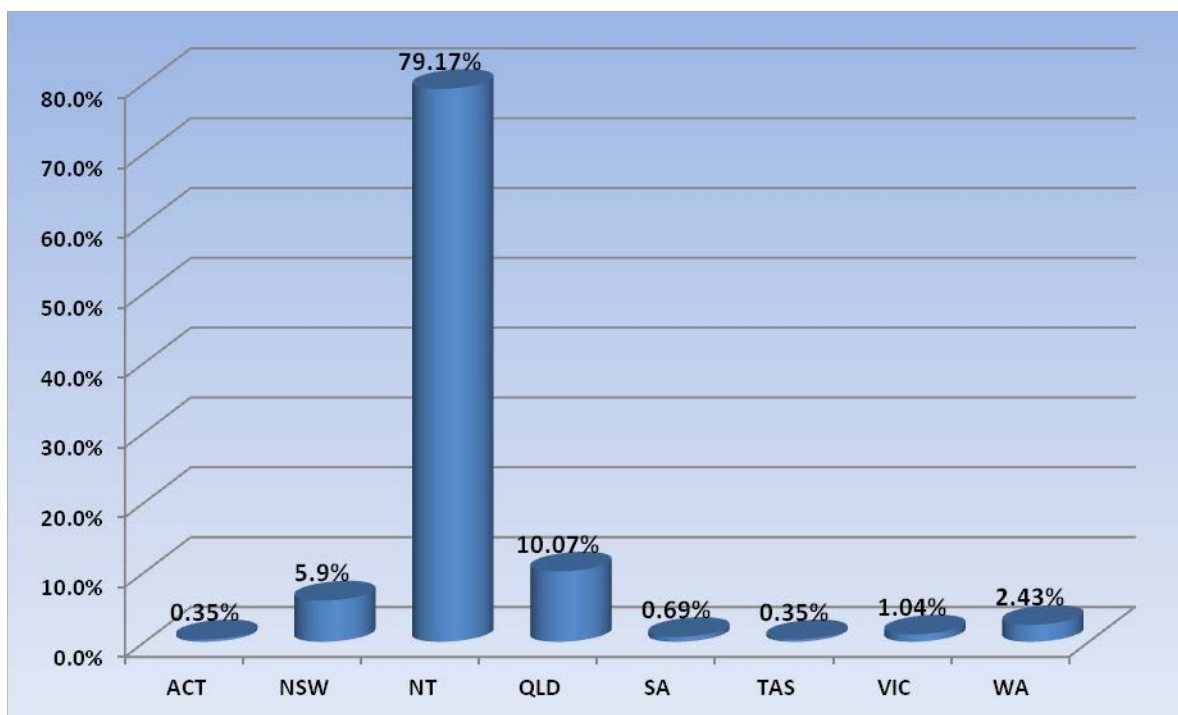
Index of Tables

Aboriginal and Torres Strait Islander Health Practitioners: State and territory by registration type ...	2
% By state and territory	2
Aboriginal and Torres Strait Islander Health Practitioners: Age by registration type	3
% By age	3
Aboriginal and Torres Strait Islander Health Practitioners: Gender by state and territory by registration type.....	4

Aboriginal and Torres Strait Islander Health Practitioners: State and territory by registration type

State	General	Total	% By State
ACT	1	1	0.35%
NSW	17	17	5.9%
NT	228	228	79.17%
QLD	29	29	10.07%
SA	2	2	0.69%
TAS	1	1	0.35%
VIC	3	3	1.04%
WA	7	7	2.43%
Total	288	288	

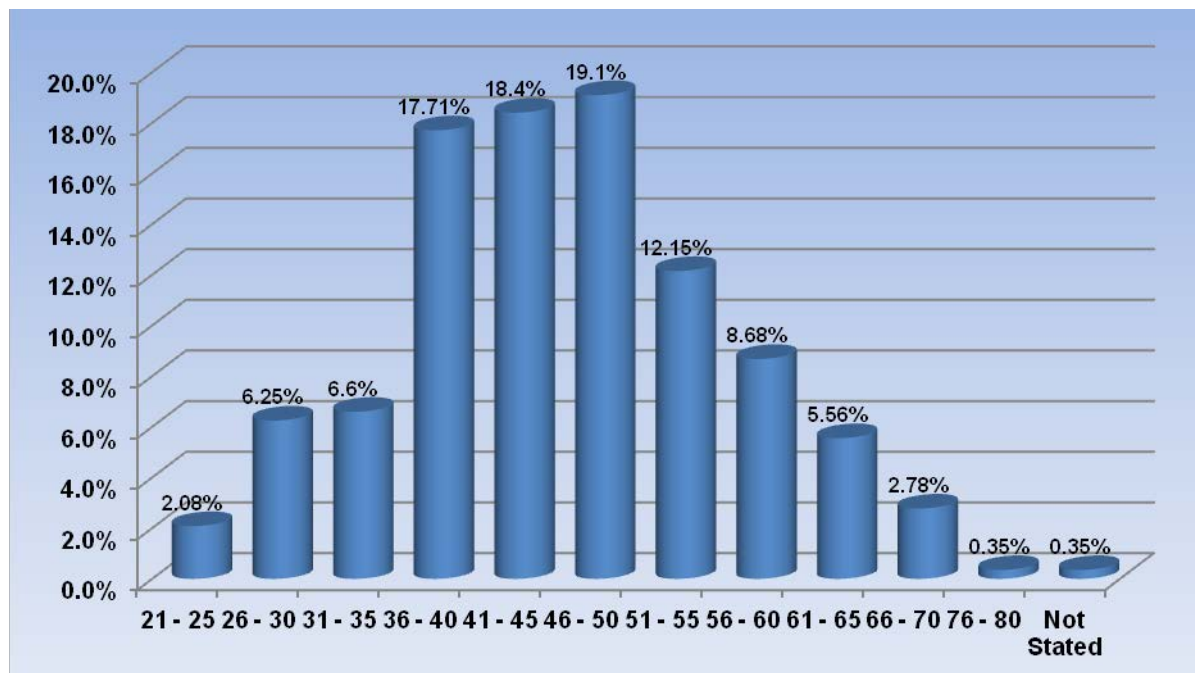
% By state and territory



Aboriginal and Torres Strait Islander Health Practitioners: Age by registration type

Age Group	General	Total	% By Age Group
21 - 25	6	6	2.08%
26 - 30	18	18	6.25%
31 - 35	19	19	6.6%
36 - 40	51	51	17.71%
41 - 45	53	53	18.4%
46 - 50	55	55	19.1%
51 - 55	35	35	12.15%
56 - 60	25	25	8.68%
61 - 65	16	16	5.56%
66 - 70	8	8	2.78%
76 - 80	1	1	0.35%
Not Stated	1	1	0.35%
Total	288	288	

% By age



Aboriginal and Torres Strait Islander Health Practitioners: Gender by state and territory by registration type

Sex	State	General	Total Count	% By Sex By State
Female	ACT	1	1	0.35%
	NSW	11	11	3.82%
	NT	164	164	56.94%
	QLD	24	24	8.33%
	SA	2	2	0.69%
	TAS	1	1	0.35%
	VIC	3	3	1.04%
	WA	6	6	2.08%
	Sub total	212	212	73.61%
Male	NSW	6	6	2.08%
	NT	64	64	22.22%
	QLD	5	5	1.74%
	WA	1	1	0.35%
	Sub total	76	76	26.39%
Total		288	288	