

## Aboriginal and Torres Strait Islander Registration Data: June 2013

---

Published September 2013

### Introduction

The functions of the Aboriginal and Torres Strait Islander Health Practice Board of Australia include:

- registering the Aboriginal and Torres Strait Islander practitioners and students
- developing standards, codes and guidelines for the Aboriginal and Torres Strait Islander health practice profession
- handling notifications, complaints, investigations and disciplinary hearings
- approving accreditation standards and accredited courses of study.

The Board's functions are supported by Australian Health Practitioner Regulation Agency (AHPRA). For information about legislation governing our operations see AHPRA's Legislation & Publications at [www.ahpra.gov.au/Legislation-and-Publications.aspx](http://www.ahpra.gov.au/Legislation-and-Publications.aspx)

The Board has analysed its registration data and produced a number of statistical breakdowns about registrants to share with the profession and community. The Board shares these breakdowns regularly.

For more information on Aboriginal and Torres Strait Islander Health Practitioners registration, please see the Board's website: [www.atsihealthpracticeboard.gov.au/Registration.aspx](http://www.atsihealthpracticeboard.gov.au/Registration.aspx)

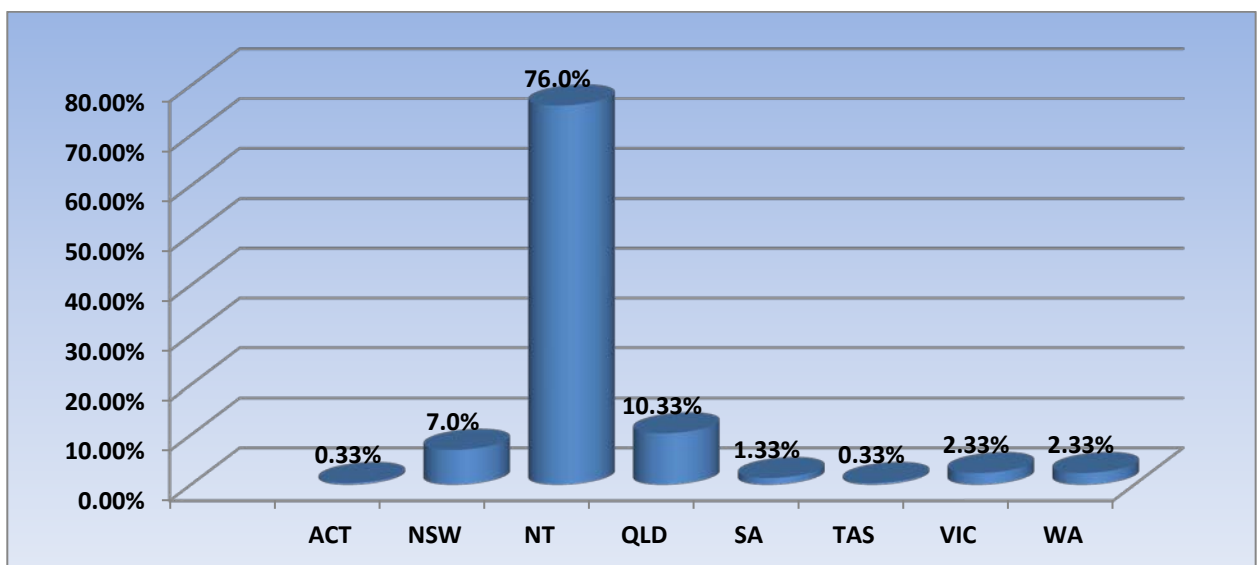
### Index of Tables

<b>Aboriginal and Torres Strait Islander Health Practitioners: State and territory by registration type ...</b>	<b>2</b>
<b>Aboriginal and Torres Strait Islander Health Practitioners: Age by registration type .....</b>	<b>3</b>
<b>Aboriginal and Torres Strait Islander Health Practitioners: Gender by state and territory by registration type.....</b>	<b>4</b>

## Aboriginal and Torres Strait Islander Health Practitioners: State and territory by registration type

Aboriginal and Torres Strait Islander Health Practitioners: Registration Type by State			
State	General	Total	% By State
ACT	1	1	0.33%
NSW	21	21	7.0%
NT	228	228	76.0%
QLD	31	31	10.33%
SA	4	4	1.33%
TAS	1	1	0.33%
VIC	7	7	2.33%
WA	7	7	2.33%
<b>Total</b>	<b>300</b>	<b>300</b>	

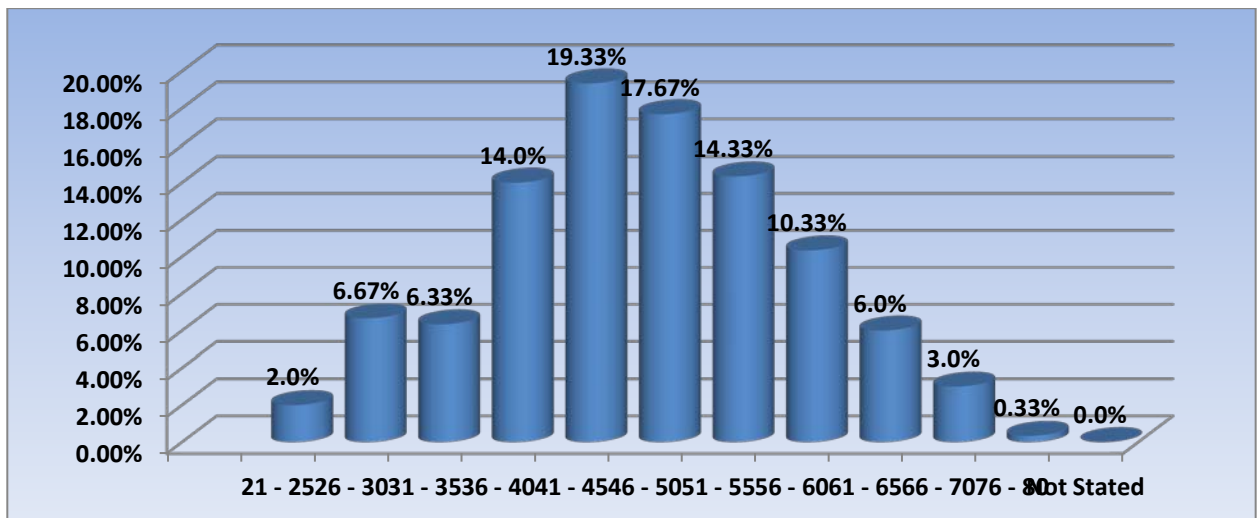
### Percent by state and territory



## Aboriginal and Torres Strait Islander Health Practitioners: Age by registration type

Aboriginal and Torres Strait Islander Health Practitioners: Registration by Age and Registration Type			
Age Group	General	Total	% By Age Group
21 - 25	6	6	2.0%
26 - 30	20	20	6.67%
31 - 35	19	19	6.33%
36 - 40	42	42	14.0%
41 - 45	58	58	19.33%
46 - 50	53	53	17.67%
51 - 55	43	43	14.33%
56 - 60	31	31	10.33%
61 - 65	18	18	6.0%
66 - 70	9	9	3.0%
76 - 80	1	1	0.33%
Not Stated			
<b>Total</b>	<b>300</b>	<b>300</b>	

Percent by age



## Aboriginal and Torres Strait Islander Health Practitioners: Gender by state and territory by registration type

Aboriginal and Torres Strait Islander Health Practitioners: Registration by Sex by State				
Sex	State	General	Total Count	% By Sex By State
Female	ACT	1	1	0.45%
	NSW	13	13	5.91%
	NT	164	164	74.55%
	QLD	26	26	11.82%
	SA	3	3	1.36%
	TAS	1	1	0.45%
	VIC	6	6	2.73%
	WA	6	6	2.73%
	Sub total		220	220
Male	NSW	8	8	10.0%
	NT	64	64	80.0%
	QLD	5	5	6.25%
	SA	1	1	1.25%
	VIC	1	1	1.25%
	WA	1	2	2.5%
	Sub total		80	80
<b>Total</b>		<b>300</b>	<b>300</b>	