

# Aboriginal and Torres Strait Islander Health Practice Registration Data: December 2013

---

Published January 2014

## Introduction

The functions of the Aboriginal and Torres Strait Islander Health Practice Board of Australia include:

- registering the Aboriginal and Torres Strait Health Islander health practitioners and students
- developing standards, codes and guidelines for the Aboriginal and Torres Strait Islander health practice profession
- handling notifications, complaints, investigations and disciplinary hearings
- approving accreditation standards and accredited courses of study.

The Board's functions are supported by [Australian Health Practitioner Regulation Agency](http://www.ahpra.gov.au) (AHPRA). For information about legislation governing our operations see AHPRA's Legislation & Publications at [www.ahpra.gov.au/Legislation-and-Publications.aspx](http://www.ahpra.gov.au/Legislation-and-Publications.aspx)

The Board has analysed its registration data and produced a number of statistical breakdowns about registrants to share with the profession and community. The Board shares these breakdowns regularly.

For more information on Aboriginal and Torres Strait Islander Health Practitioners registration, please see the Board's website: [www.atsihealthpracticeboard.gov.au/Registration.aspx](http://www.atsihealthpracticeboard.gov.au/Registration.aspx)

## Index of tables

ATSI Practitioner Registration Type by State .....	2
ATSI Practitioners by Age .....	2
ATSI Practitioners by Gender .....	3
ATSI Practitioner Percentages by Gender .....	3

## Aboriginal and Torres Strait Islander Health Practitioners - Registration Type by State

ATSI Practitioner	ACT	NSW	NT	QLD	SA	TAS	VIC	WA	No PPP	Total
General	2	26	215	34	10	1	8	13	-	309
<b>Total Practitioners</b>	<b>2</b>	<b>26</b>	<b>215</b>	<b>34</b>	<b>10</b>	<b>1</b>	<b>8</b>	<b>13</b>	<b>-</b>	<b>309</b>

Table 1: ATSI Practitioner Registration Type by State

### ATSI Practitioners by Principal Place of Practice

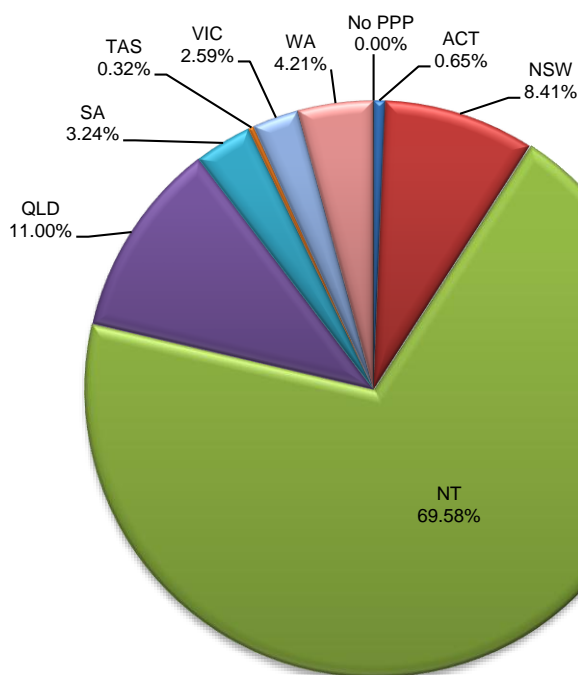


Chart 1: ATSI Practitioner Percentages by Principal Place of Practice

## Aboriginal and Torres Strait Islander Health Practitioners - Registration Type by Age

ATSI Practitioner	Age Group	Type	% by Age Group
		General	
	U-25	4	1.29%
	25-29	18	5.83%
	30-34	20	6.47%
	35-39	39	12.62%
	40-44	63	20.39%
	45-49	56	18.12%
	50-54	48	15.53%
	55-59	30	9.71%
	60-64	21	6.80%
	65-69	7	2.27%
	70-74	2	0.65%
	75-79	1	0.32%
	80+	-	-
<b>Total</b>		<b>309</b>	<b>100.00%</b>

Table 2: ATSI Practitioners by Age

### Aboriginal and Torres Strait Islander Health Practitioners by Age

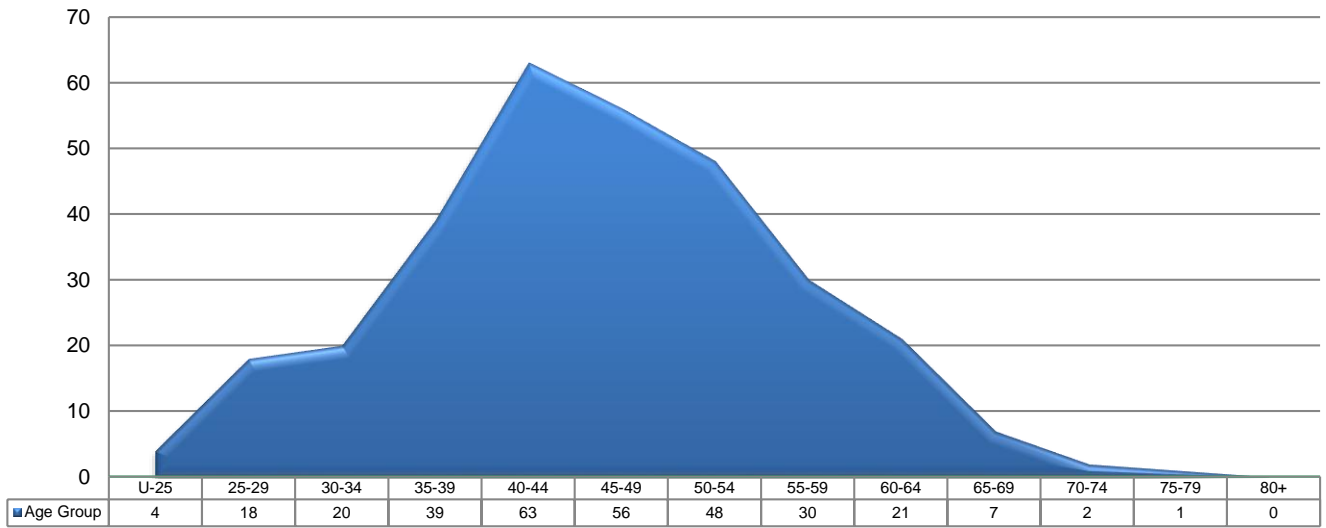


Chart 2: ATSI Practitioners by Age

### Aboriginal and Torres Strait Islander Health Practitioners - by Gender

ATSI Practitioner	ACT	NSW	NT	QLD	SA	TAS	VIC	WA	No PPP	Total
Female	2	18	153	25	8	1	7	9	-	223
Male	-	8	62	9	2		1	4	-	86
<b>Total Practitioners</b>	<b>2</b>	<b>26</b>	<b>215</b>	<b>34</b>	<b>10</b>	<b>1</b>	<b>8</b>	<b>13</b>	<b>-</b>	<b>309</b>

Table 3: ATSI Practitioners by Gender

### Aboriginal and Torres Strait Islander Health Practitioners - Percentage by Gender

ATSI Practitioner	ACT	NSW	NT	QLD	SA	TAS	VIC	WA	No PPP	Total
Female	100.00%	69.23%	71.16%	73.53%	80.00%	100.00%	87.50%	69.23%	-	<b>72.17%</b>
Male	-	30.77%	28.84%	26.47%	20.00%	-	12.50%	30.77%	-	<b>27.83%</b>

Table 4: ATSI Practitioner Percentages by Gender